



10 Woodlands Drive 50
Singapore 738853
Telephone: (65) 62697410
Facsimile: (65) 63671165
Website:
www.woodlandspri.moe.edu.sg
Email: wdp@moe.edu.sg

Woodlands Primary School

Reference 89 / 2017

30 August 2017

Dear Parent/Guardian,

Parent Survey 2017

In line with the school's continual efforts to improve its programmes and processes, we would like to gather feedback from our stakeholders. Your inputs are valuable and will provide the information for the school to serve you better.

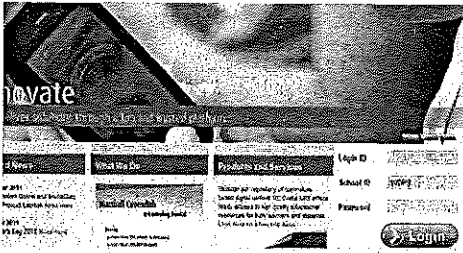
2. Please spend time to complete the survey in our MC Online Portal.
3. A step-by step guide is provided along with this letter to assist you in the completion of the survey.
4. You can complete the survey **from 31 August to 15 September 2017**.
5. Please complete the survey online by the closing date.

Thank you.

Yours in partnership,

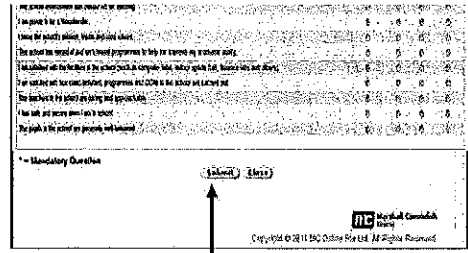
*Ms Winnie Tan
Principal*

Step – by step guide to complete the surveys online



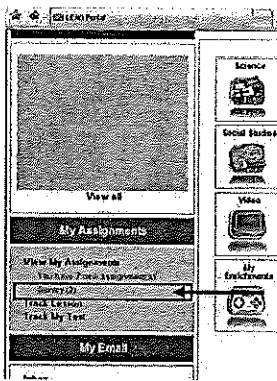
Step 1:

Log on to www.lead.com.sg using your child's log In ID and password



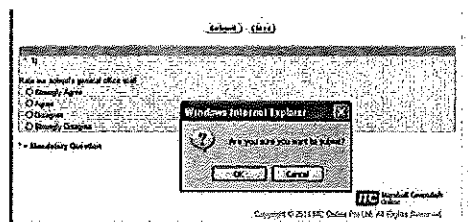
Step 5:

All questions are mandatory. Click 'submit' after completing all the questions.



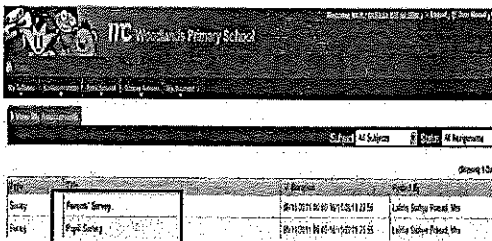
Step 2:

Click on survey



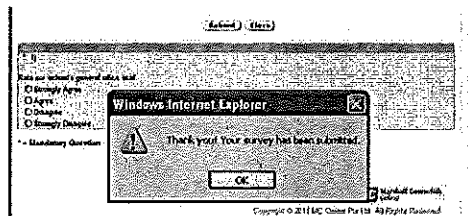
Step 6:

Click 'OK'



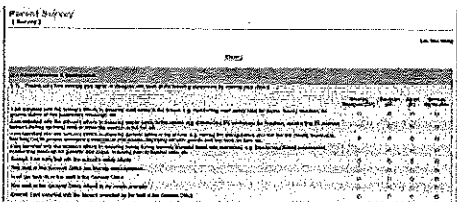
Step 3:

Click on 'Parents' survey' to complete the survey for parents and click on 'Pupil Survey' to get your child to complete the survey for pupils



Step 7:

Click 'OK' when the above dialogue box appears.



Step 4:

Complete ALL the questions by rating how strongly you agree or disagree with each of the survey questions.



Step 8:

Click 'OK' when the above dialogue box appears.